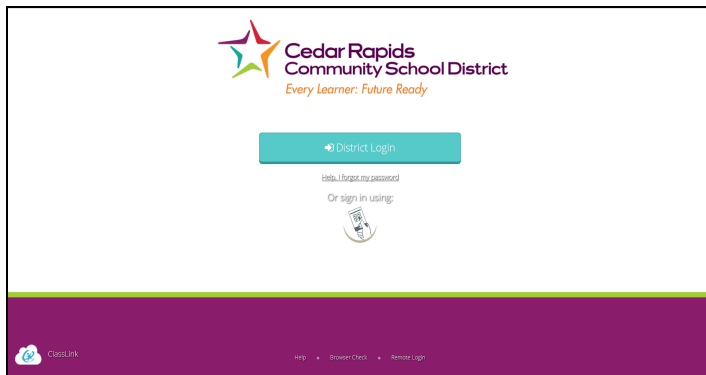


ClassLink Quick Guide

1. Sign In

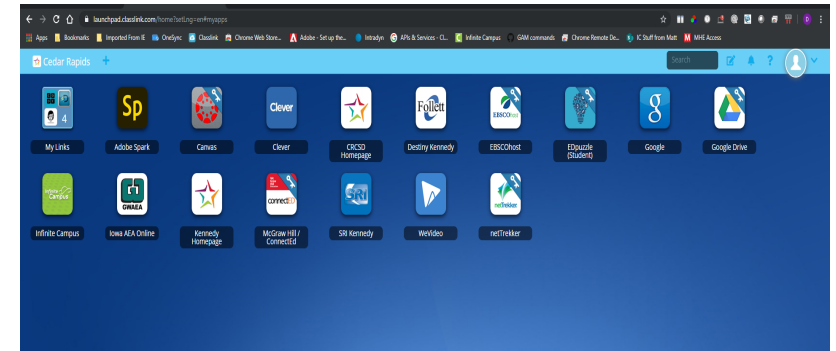
my.classlink.com/crcsd

Sign in by using your District Login



2. My Apps

The My Apps screen is where all of your online resources will be located. Enter your username and password once (if prompted) and ClassLink will remember it for you! [Watch Video](#)



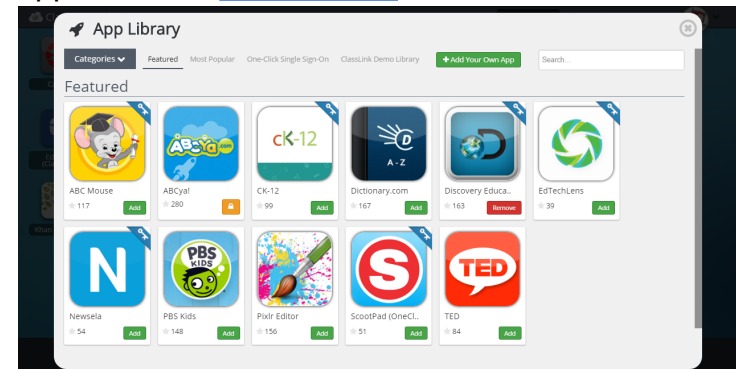
3. Update Password for an App

Right click an app and choose 'Update Password' to update or change your stored username and passwords for your applications. This is if you have entered your username or password incorrectly or if something has changed/updated.



4. App Library

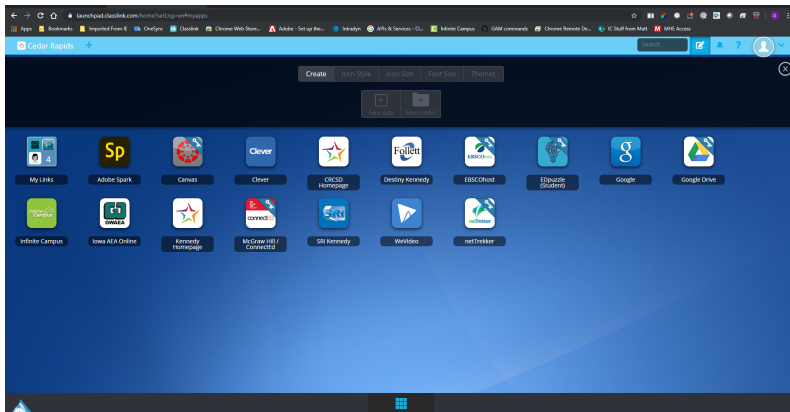
The library contains many educational resources to choose from. Click the Plus (+) on the top left of the My Apps screen. Click Add on any app to place it on your My Apps screen. [Watch Video](#)



ClassLink Quick Guide

5. Edit Mode

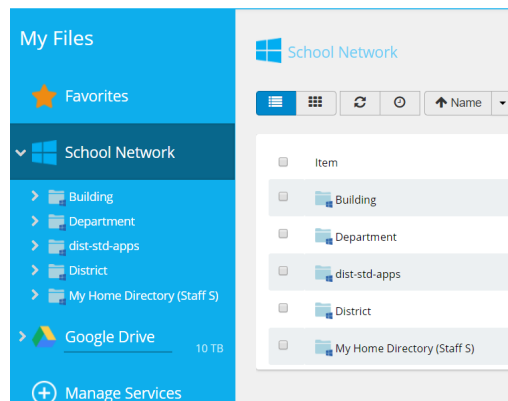
To go into Edit Mode, click the paper and pencil symbol on the top right of your screen. While in Edit Mode, you can create folders and customize your My Apps screen. [Watch Video](#)



7. My Files - located at bottom of main screen

Select My Files and search for school network drives and enable cloud drives. Access any files and folders located on these drives. Expand arrows to view options for network drives. Select Manage Services to enable cloud drives.

Tip: If files do not populate, logout and log back in to ClassLink after searching for files. Use Google Chrome Browser and if prompted Open ClassLinkAgent.



6. My Profile

Here is where you change your profile picture, themes & colors, access your password locker.



Login Page

- Type in your school website URL, schoolname.crschools.us or search for your school in the browser.

You can also type in my.classlink.com/crcsd.

You can access Classlink from **Quicklinks** located on the Home Page of the school website. Navigate to the bottom right corner of the screen.

- Click on **Classlink**

QUICK LINKS

Infinite Campus
ClassLink
Canvas
Breakfast & Lunch Menus
CRCSD Website

