

# FUTURE-READY FACILITIES PLAN BOND TASK FORCE COMMITTEE

## ESTABLISHING GOALS WORKSHOP

November 12, 2024



Superintendent  
**Dr. Tawana  
Grover**





# NEEDS & CHALLENGES



ENROLLMENT  
CHALLENGES



COST TO  
OPERATE

NEIGHBOR-  
HOOD  
SCHOOLS



RIGHT SIZED  
SCHOOLS



HISTORIC  
PRESERVATION



The voices that  
articulate the  
complexities







**WE ARE ALL HERE FOR THE SAME PURPOSE**

**IMPROVE OUTCOMES FOR  
ALL CEDAR RAPIDS STUDENTS**

# Binders = Information



Please pick up your binders if you haven't already.

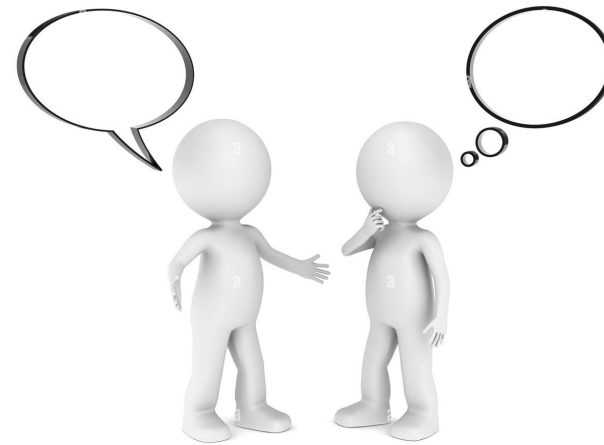
If you took your binders home, please add tonight's presentation

We encourage you to take them home and study the information

# Feedback?



Do we have any  
questions from the  
community?



Have you actively been sharing  
information with your  
neighbors and friends?



# October Meeting Follow-up

## Questions

Why are there so many internal stairs at Pierce?

Kennedy CCR Phase 2: When was Phase 1?

Kennedy CCR Phase 2: Where is there room for any expansion at Kennedy without losing parking?

## Answers

Pierce was built on sloped land. A terraced approach for the building was more economical than either excavating into the hill to building a 1-level school or building up the land. 1964 (24 years prior to ADA) Discussion with Quinn at October Meeting. ADA and Building Codes are constantly evolving.

Labeled incorrectly. Should have been labeled Phase 1

A possible remodel and addition could see additions added at the NW of the building as well as the SE of the building without impacting parking or athletics.



# Area Schools Organization

**Chief of Schools**  
**Dr. Maura Hobson**

**Chief of Schools**  
**Mark Timmerman**

**Chief of Schools**  
**Linda Reysack**

## **AREA 1 SCHOOLS**

**Washington High School**  
Franklin Middle School  
McKinley STEAM  
Erskine Elementary  
Grant Elementary  
Grant Wood Elementary  
Johnson STEAM  
Kenwood Leadership Academy  
Trailside Elementary  
Wright Elementary

## **AREA 2 SCHOOLS**

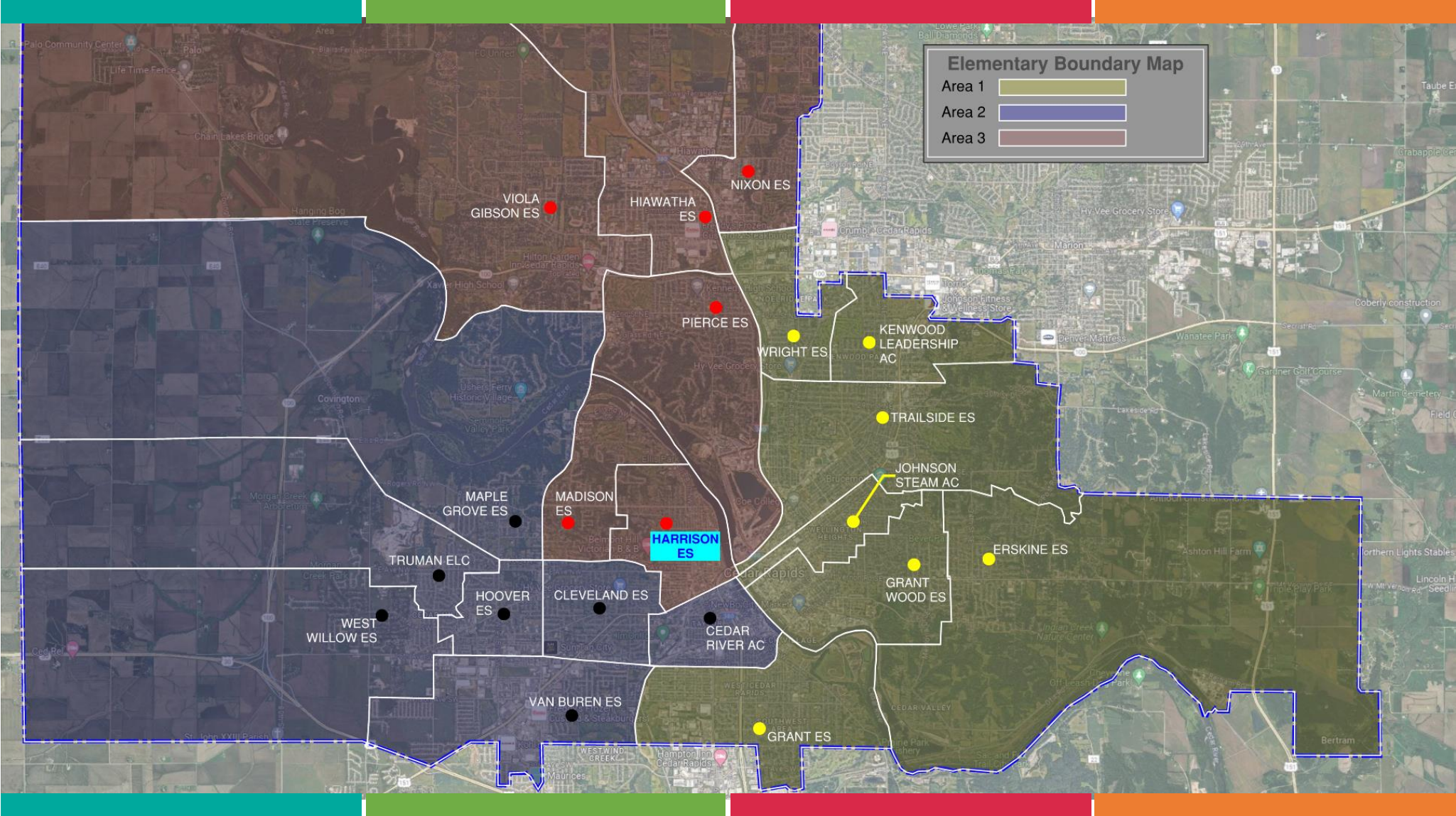
**Jefferson High School**  
Taft Middle School  
Roosevelt Middle School  
Wilson Middle School  
Cedar River Academy  
Cleveland Elementary  
Hoover Elementary  
Maple Grove Elementary  
Van Buren Elementary  
West Willow Elementary  
Truman Early Learning Center

## **AREA 3 SCHOOLS**

**Kennedy High School**  
**Metro High School**  
**City View High School**  
Harding Middle School  
Hiawatha Elementary  
Harrison Elementary  
Madison Elementary  
Nixon Elementary  
Pierce Elementary  
Viola Gibson Elementary



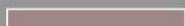


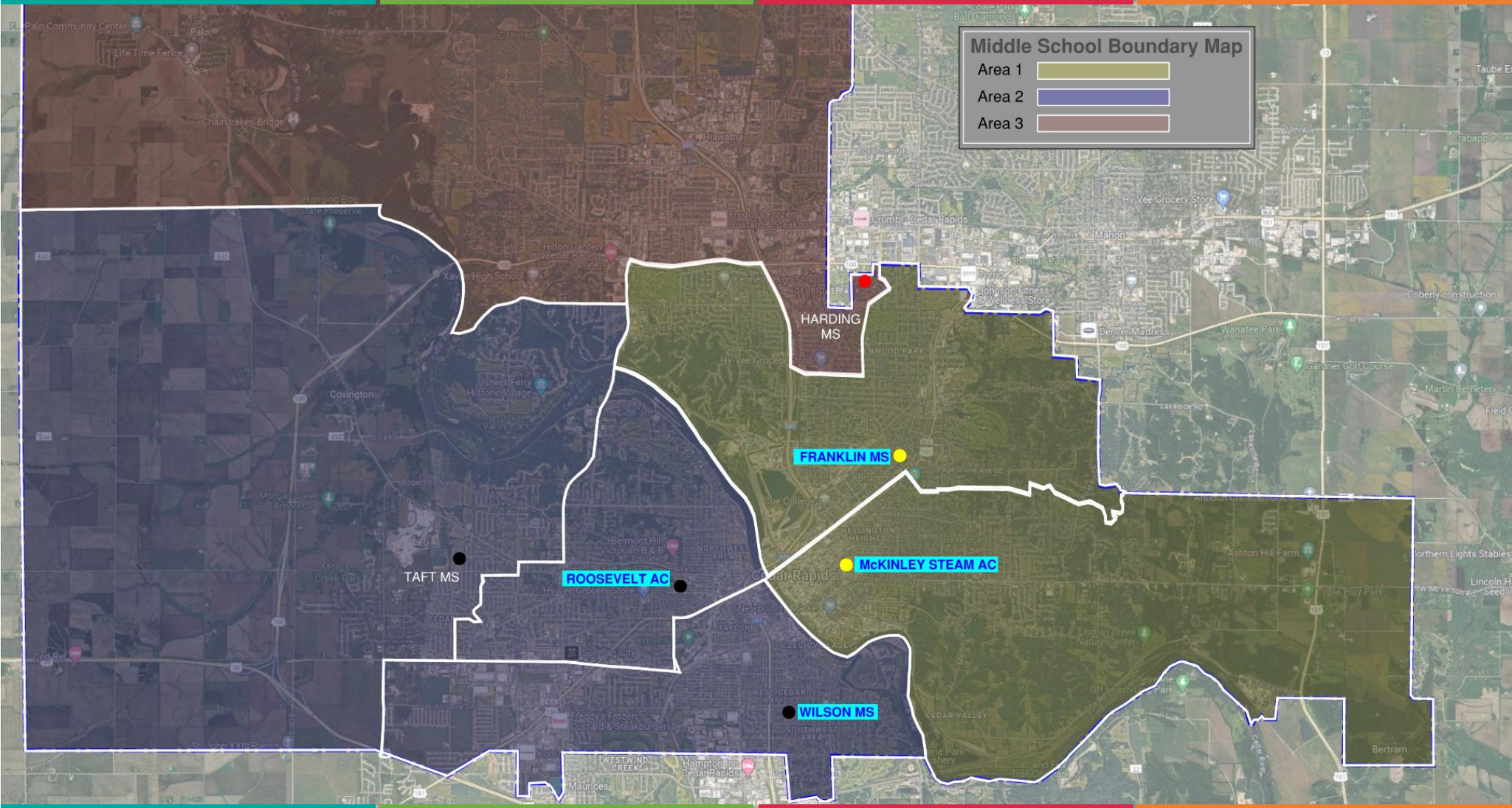




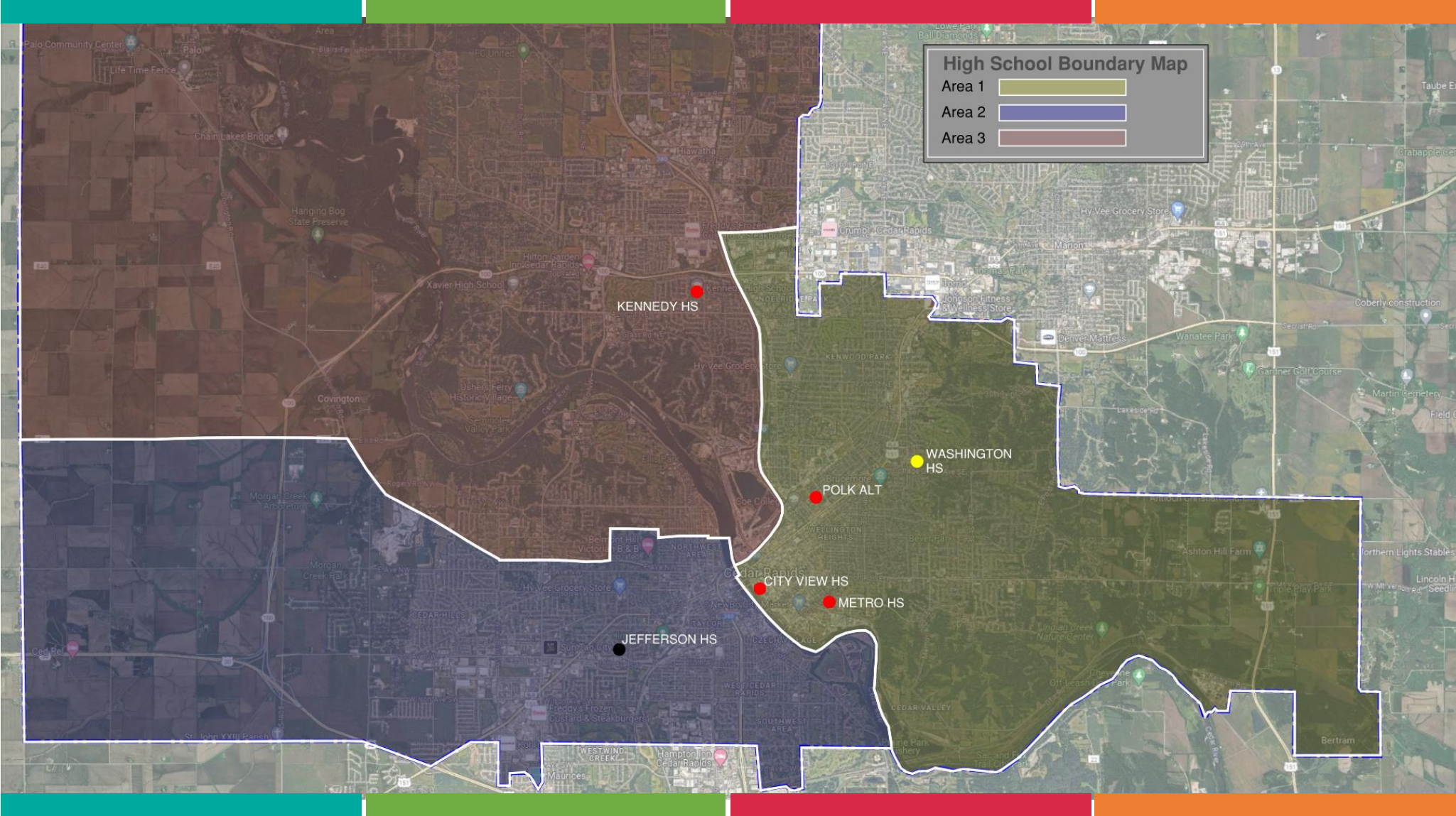


### Middle School Boundary Map

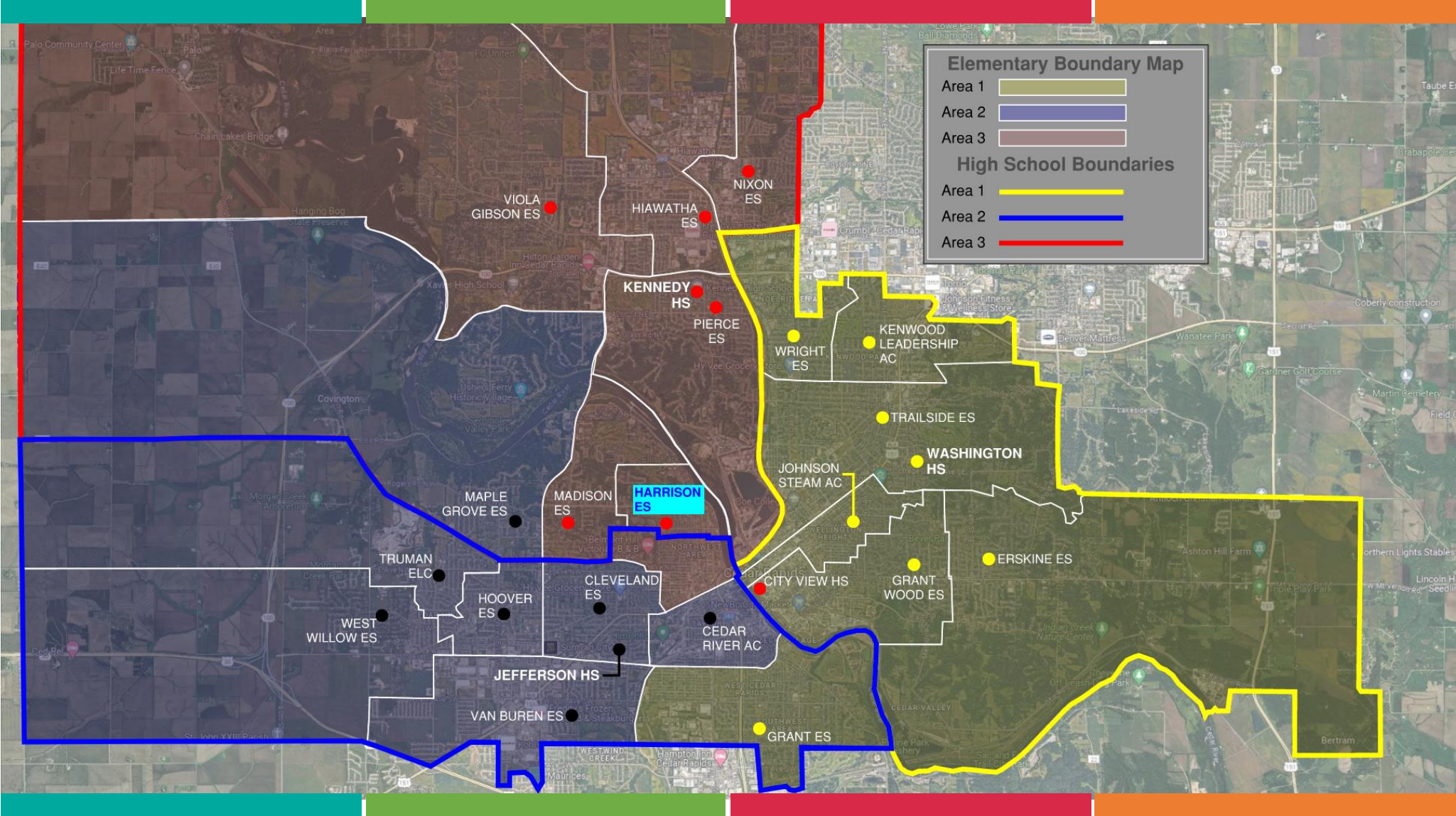
- Area 1 
- Area 2 
- Area 3 



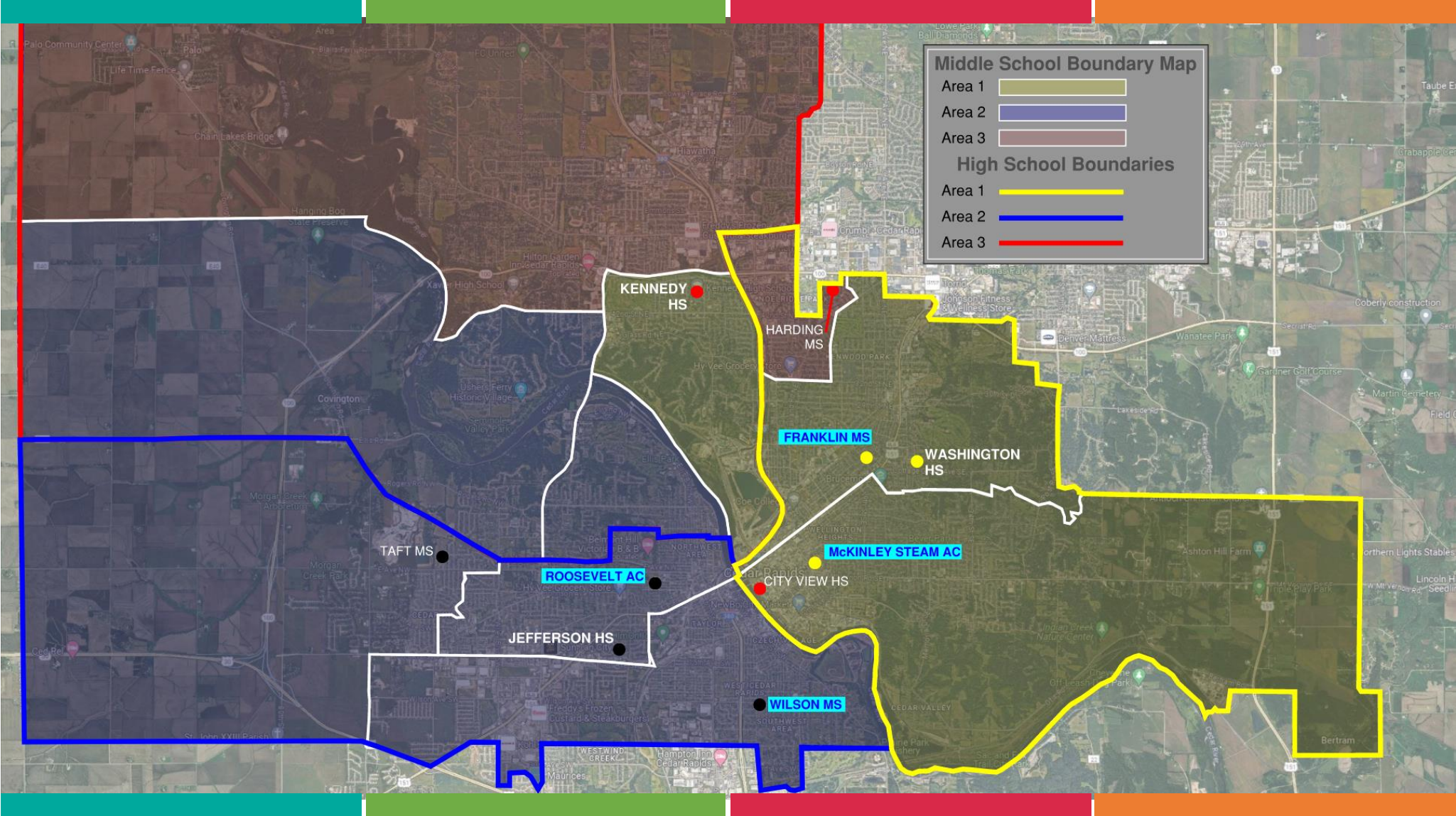












# DISTRICT SCHOOL FEEDER PATTERNS

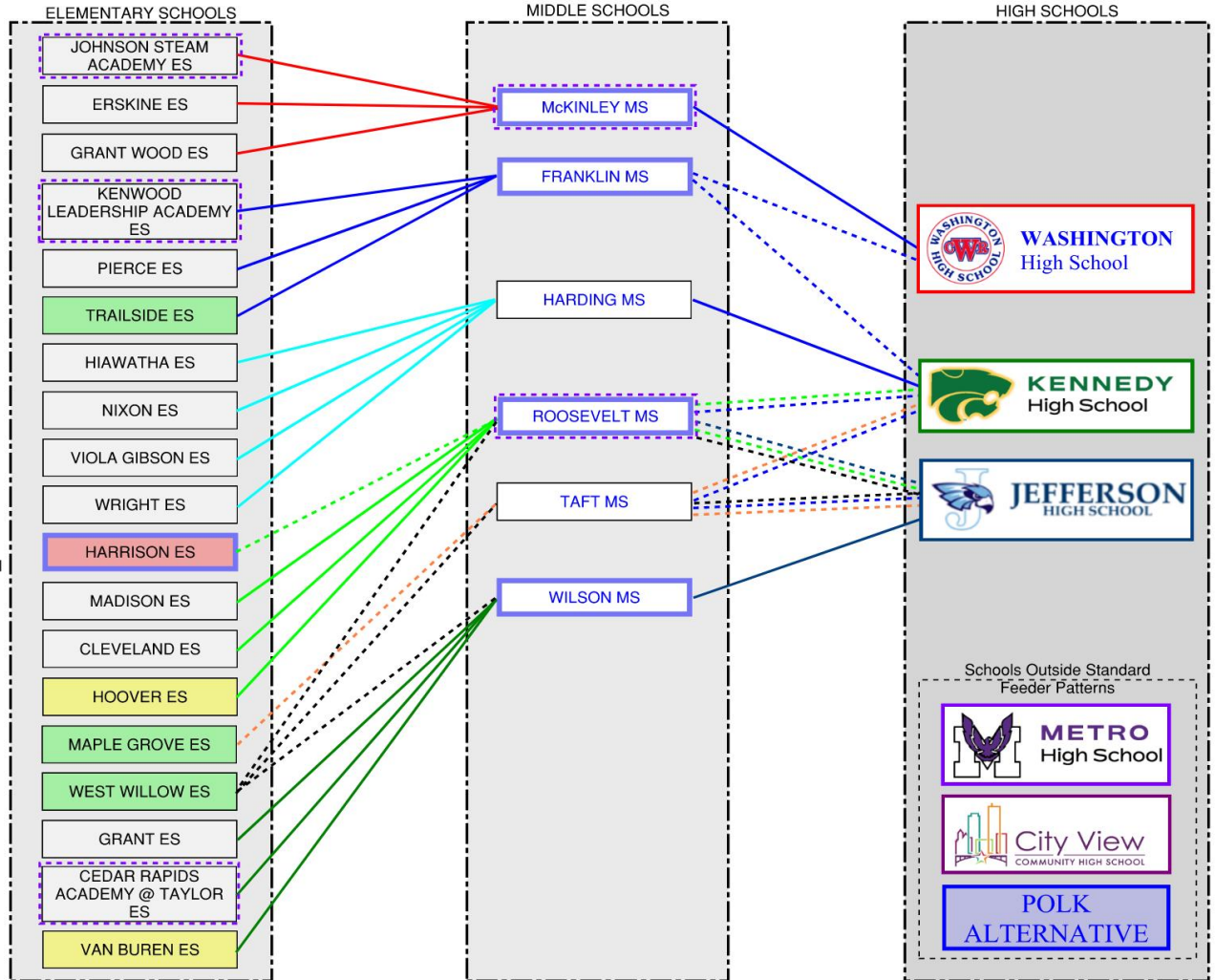
September 2024



Feeder Patterns based on geographic proximity to schools  
 ES Feeding to MS  
 MS Feeding to HS

- UNDETERMINED
- SCHOOLS TO BE CLOSED
- SCHOOLS TO BE REPLACED
- SCHOOLS LESS THAN 20 YEARS OLD
- SCHOOLS TO BE RENOVATED

- ACADEMY
- HISTORICALLY SIGNIFICANT



# Task Force Workshop

## Bond Projects

### Exercise:

- Each table is asked to select projects for the bond based on a single criteria. This is the only criteria you should use to select your projects.
- Every table has the same available projects list.
- After the table selections are made, we will have a Round Robin Discussion so everyone can quickly report out how their selections were made to other groups.

### Goals:

1. To understand the nature of the competing interests in the community.
2. To develop project lists based on different priorities.

### Timing:

- Table Discussion = 20 minutes
- Pin-up Round Robin Discussion = 3 Minutes per group (10 groups = 30 Minutes)
- Total Time = 50 Minutes

### Criteria:

- Enrollment – Capacity
- Preserving History – Building Age
- Operational Efficiency
- Neighborhood Schools
- Feeder Pattern



# Task Force Workshop

## Bond Projects

### **Mentimeter Feedback:**

How would you rate the 5 criteria from most important to least important

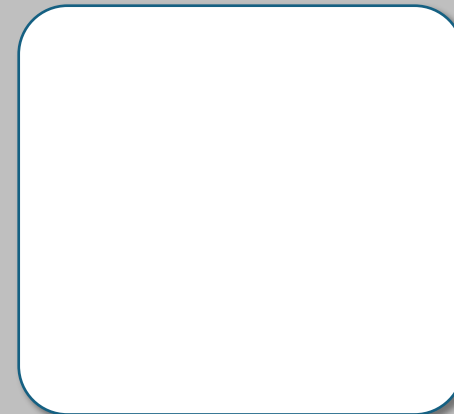
- Enrollment – Capacity**
- Preserving History – Building Age**
- Operational Efficiency**
- Neighborhood Schools**
- Feeder Pattern**

### **Consider This:**

As you rate these, consider which of these are most important for affecting outcomes for our Students

### **Goal:**

To determine what should be the priority ranking for these criteria that help guides the bond planning process



# October Meeting Follow-up

## Results of Homework

### Bond Option 1

Increase Tax Rate  
\$1.50 / \$1,000  
Property Tax Increase  
Renewable

\$139,745,000  
For Facilities  
Improvements



### Bond Option 2

Increase Tax Rate  
\$2.00 / \$1,000  
Property Tax Increase  
Renewable

\$186,320,000  
For Facilities  
Improvements



### Bond Option 3

Increase Tax Rate  
\$2.70 / \$1,000  
Property Tax Increase  
Renewable

\$216,750,000  
For Facilities  
Improvements



### Bond Option 4

Increase Tax Rate  
\$2.70 / \$1,000  
Property Tax Increase  
Non-Renewable

\$251,495,000  
For Facilities  
Improvements



# October Meeting Follow-up

## Results of Homework

### 13 Respondents

Multiple Bond Options were utilized in the exercise.

- 7 of 13 used Option 1
- 8 of 13 used Option 2
- **12 of 13 used Option 3**
- 7 of 13 used Option 4

### 34 Possible Selections

4 of the 13 Respondents are associated with the District

**Bond Option #3** was the most used Bond Approach

### Top 10 Projects by Selection

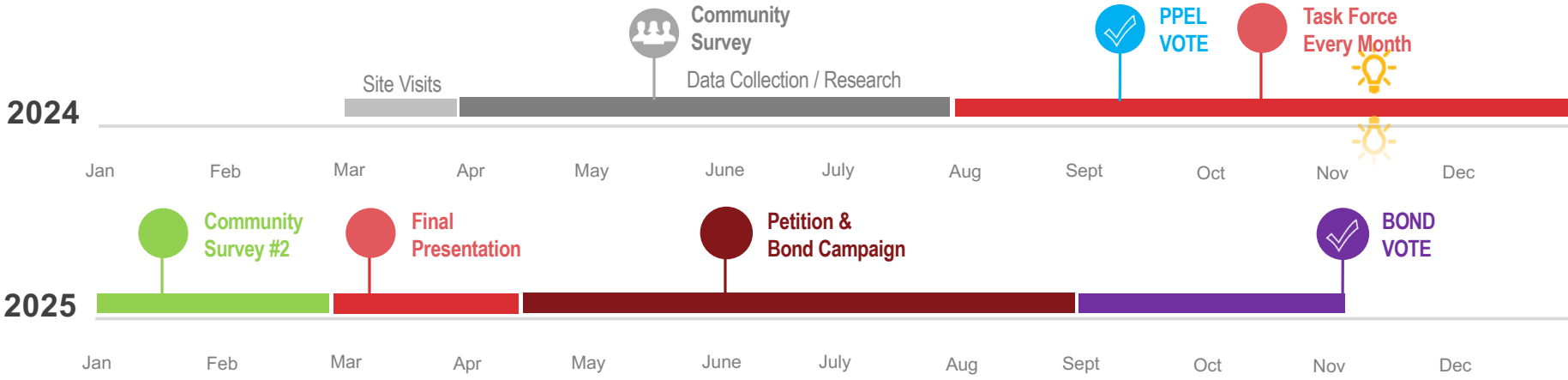
1. Washington CCR Phase 2 - 21 Selections
2. Jefferson CCR Phase 2 - 19 Selections
3. Kennedy CCR - 17 Selections
4. Erskine New School - 15 Selections
5. Harding New MS - 14 Selections
6. Kennedy Kitchen - 12 Selections
7. Wright HVAC - 12 Selections
8. Pierce HVAC - 11 Selections
9. Wilson Reno - 11 Selections
10. Kenwood HVAC - 10 Selections

### New Schools Selected:

- Cleveland ES (3)
- Erskine ES (15)
- Grant ES (5)
- Harding MS (14)
- Hiawatha (5)
- Johnson STEAM (4)
- Kenwood LA (2)
- Nixon ES (2)
- Pierce ES (8)
- Taft MS (6)

# 358 DAYS UNTIL BOND VOTE

## 1 YEAR UNTIL THE VOTE



 TODAY

# Future Meetings

2024

August 13 — Bond Process

September 17 — Funding Alignment

October 8 — Needs/Challenges Facing the District

**November 12 — Establishing Goals Workshop**

December 10 — Bond Options Workshop



# FUTURE MEETINGS

2025

January

Community Survey #2

March 11

Refine Bond Options Workshop (If Needed)

April 8

Presentation of Final Bond Options





# Questions

If questions come up between meetings or as you are studying the material, please don't wait until the next meeting. Send all questions via email to:

[futurereadyfacilities@crschools.us](mailto:futurereadyfacilities@crschools.us)





# THANK YOU

For Being A  
Valuable Part Of This Process

