

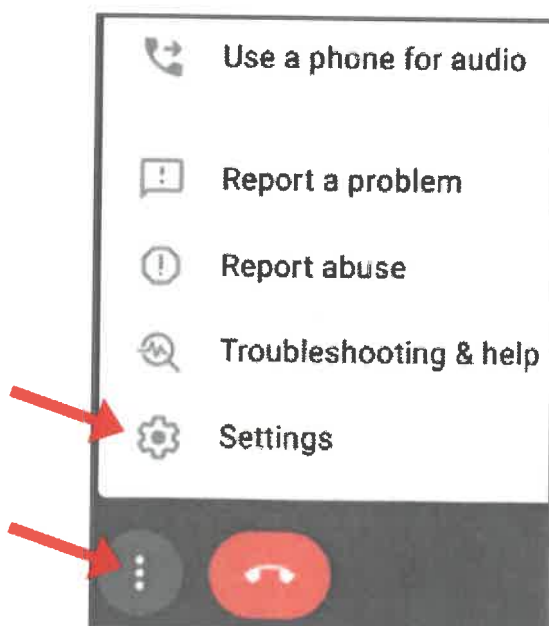
Connect Polycom Webcam to Chromebook

Connect to Polycom Webcam when attending a virtual meeting with others in this conference room.

Includes: camera, microphone and speakers.

1. Turn on the TV with Samsung remote.
2. Select your source by plugging in the HDMI cable or connect wirelessly (view Airtame Wireless instructions).
3. Go to your Virtual Meeting.
4. Select the Polycom Webcam for your camera & microphone.
5. Adjust the speaker volume from your device.

Google Meet Settings



Zoom Settings

